

School Performance Report 2023

East Doncaster Secondary College

October 2023



2023 SCHOOL PERFORMANCE NOTE

The Achievement domain of the Differentiated School Performance Method has been adjusted to cater for the introduction of new proficiency levels for reporting NAPLAN results. The Achievement domain result is derived using percentage of students in "Strong" or "Exceeding" and a relative growth measure.*

The calculation of performance groups for the Engagement domain is different to previous years to enable differentiation between schools when the majority of schools have lower attendance rates compared to previous years. This has resulted in changed split points, which compare performance to the statewide average.

Calculation of the school performance groups is otherwise consistent with previous years.

*The relative growth measure is the same as has been used in previous years and replaces benchmark growth in the 2023 DSPM as relative growth is not affected by the change of NAPLAN scale. Benchmark growth will become available from 2025 when there is sufficient data to calculate benchmarks.





EAST DONCASTER SECONDARY COLLEGE (7773)

Domains: 7
Measures: 16

Overall Performance Group



Current Level: High

Change Level: Maintained

Performance is static over time (including some cases where performance is moderate but on a declining trajectory) and requires renewed effort to be high performing.

As an overall performance group, this indicates a mix of results at the domain and measure level.

A school's overall performance group represents its combined performance on the Achievement, School Climate, Student Attitudes, Engagement, Participation and Senior Secondary (for secondary, Pri/Sec schools only) domains.

Domain Performance Group

Achievement (Reading)

INFLUENCE

The Achievement (Reading) domain measures performance on NAPLAN assessments in Reading; this includes achievement in strong or exceeding proficiency levels, lifting low performers and positive change in relative growth.

Achievement (Numeracy)

INFLUENCE

The Achievement (Numeracy) domain measures performance on NAPLAN assessments in Numeracy; this includes achievement in strong or exceeding proficiency levels, lifting low performers and positive change in relative growth.

School Climate

RECHARGE

The School Climate domain measures staff endorsements of Collective Efficacy and Academic Emphasis from the School Staff Survey.

Student Attitude

TRANSFORM

The Attitudes to School domain measures students' engagement in Stimulating Learning, Learning Confidence and Student Safety from the Attitudes to School Survey.

Engagement

INFLUENCE

The Engagement domain focuses on students' attendance.

Participation

RENEW

The Participation domain measures students' participation in NAPLAN assessments, responses to School Staff Survey and responses to Attitudes to School Survey.

Senior Secondary

INFLUENCE

The Senior Secondary domain measures students' achievement in VCE English subject and VCE/VCAL completion rates.





EAST DONCASTER SECONDARY COLLEGE (7773)

Domain	Domain Performance Group	Measure	Measure Performance Group	Current Result (Year)	Current Result (Latest year)	Current Level	Change result (Last 3 years)	Change Level
Achievement (Reading)	Influence (High, Increased)	% of students in Strong or Exceeding (Year 9)	Influence	2023	79.9%	Very High		
		% of students with Medium or High Relative Growth (Years 7 to 9)	Influence	2023	80.7%	High	3.3%	Increased
Achievement (Numeracy)	Influence (Very High, Increased)	% of students in Strong or Exceeding (Year 9)	Influence	2023	92.3%	Very High		
		% of students with Medium or High Relative Growth (Years 7 to 9)	Influence	2023	90.1%	Very High	8.2%	Increased Significantly
School Climate	Recharge (High, Decreased Significantly)	% of positive endorsement in Collective Efficacy	Recharge	2023	61.3%	High	-6.0%	Decreased Significantly
		% of positive endorsement in Academic Emphasis	Recharge	2023	58.3%	High	-3.8%	Decreased
		% of positive endorsement in Instructional Leadership	Recharge	2023	63.5%	High	-5.6%	Decreased Significantly
Student Attitude	Transform (Very Low, Decreased)	% of positive endorsement in Stimulated Learning (Years 7-12)	Transform	2023	49.9%	Very Low	-2.5%	Decreased
		% of positive endorsement in Sense of Confidence (Years 7-12)	Transform	2023	59.0%	Low	-1.3%	Decreased
		% of positive endorsement in Managing Bullying (Years 7-12)	Transform	2023	47.6%	Very Low	-4.2%	Decreased Significantly





EAST DONCASTER SECONDARY COLLEGE (7773)

Domain	Domain Performance Group	Measure	Measure Performance Group	Current Result (Year)	Current Result (Latest year)	Current Level	Change result (Last 3 years)	Change Level
Engagement	Influence (High, Small Decrease)	Attendance Rate	Influence	2022	89.8%	High	-1.4%	Small Decrease
Participation	Renew (High, Maintained)	% of students participating in NAPLAN (Year 9, Reading)	Influence	2023	97.0%	Very High	-0.1%	Maintained
		% of students participating in ATOS (Years 7-12)	Renew	2023	84.6%	Medium	-3.1%	Decreased
		% of staff participating in Staff survey	Renew	2023	76.4%	High	1.1%	Maintained
Senior Secondary	Influence (Very High, Increased)	Mean VCE English score (study group)	Influence	2022	34.5	Very High	2.1%	Increased
		% of VCE and VCAL certificate completions	Influence	2022	98.3%	Very High	0.1%	Maintained

For additional information see: [Frequently Asked Questions](#)



How to read your School Performance Report



Differentiated School Performance Groups

The Differentiated School Performance Groups (Figure 1) complement the revised approach to school review and differentiated approach to school improvement.

Five performance groups are identified. This methodology replaces the previous School Improvement Measures and associated School Threshold reports.

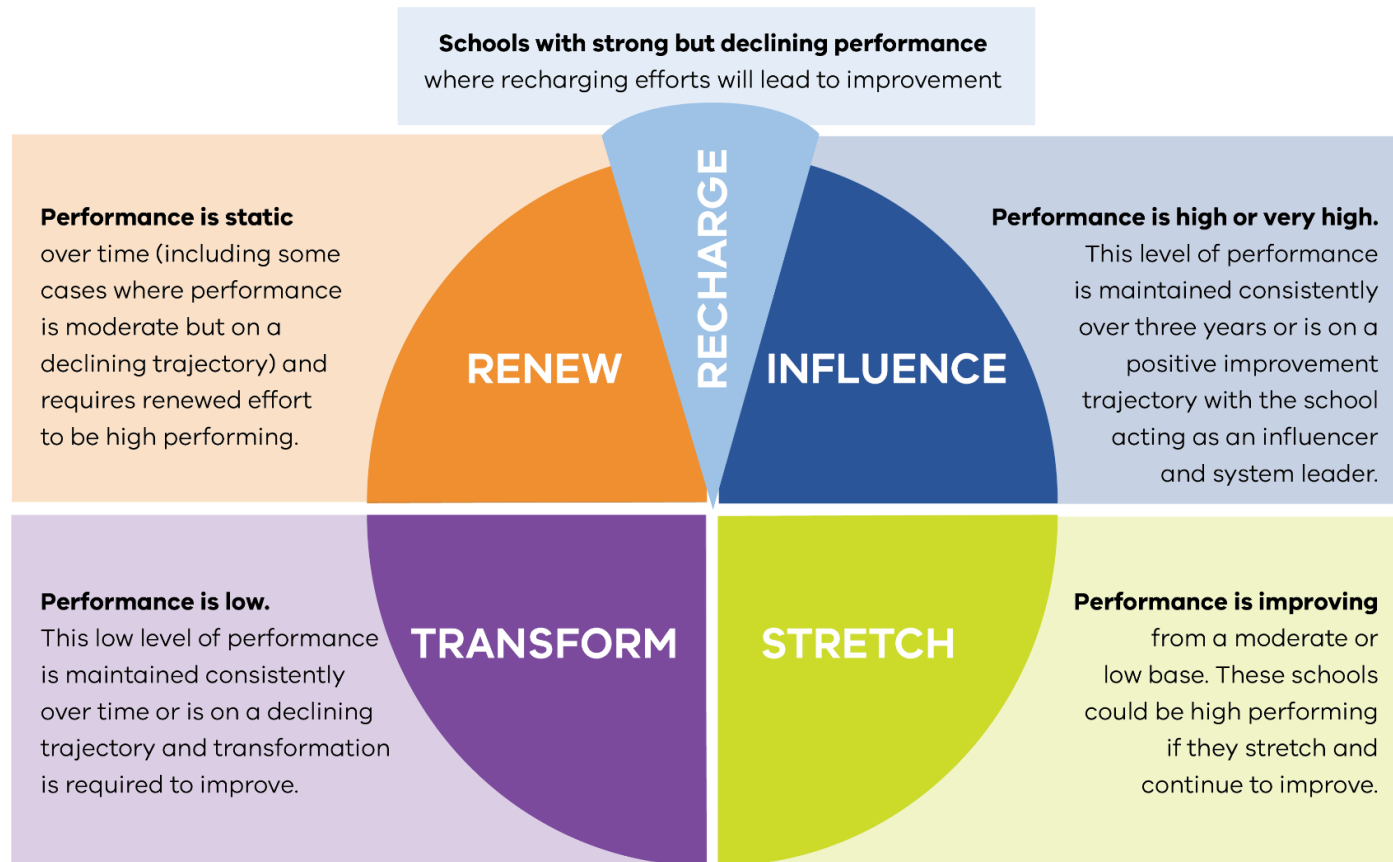


FIGURE 1: THE FIVE SCHOOL PERFORMANCE GROUPS

Determining Your School's Performance Group

		Change Level				
Level		1 (Decreased Significantly)	2 (Decreased)	3 (Maintained)	4 (Increased)	5 (Increased Significantly)
Current Level	5 (Very High)					
	4 (High)					
	3 (Medium)					
	2 (Low)					
	1 (Very Low)					

FIGURE 2: SCHOOL PERFORMANCE TABLE

- To determine your school's performance group, the 'current level' and 'change level' of all schools in the state are segmented into five performance levels to create a five-by-five table (25 segments) for each measure
- Your school's placement within this table, based on your school's 'current level' and 'change level' for each applicable measure, determines the performance group to which your school belongs
- Measures are aggregated to the domain level and an overall performance group level to provide an overall summary of your school's performance

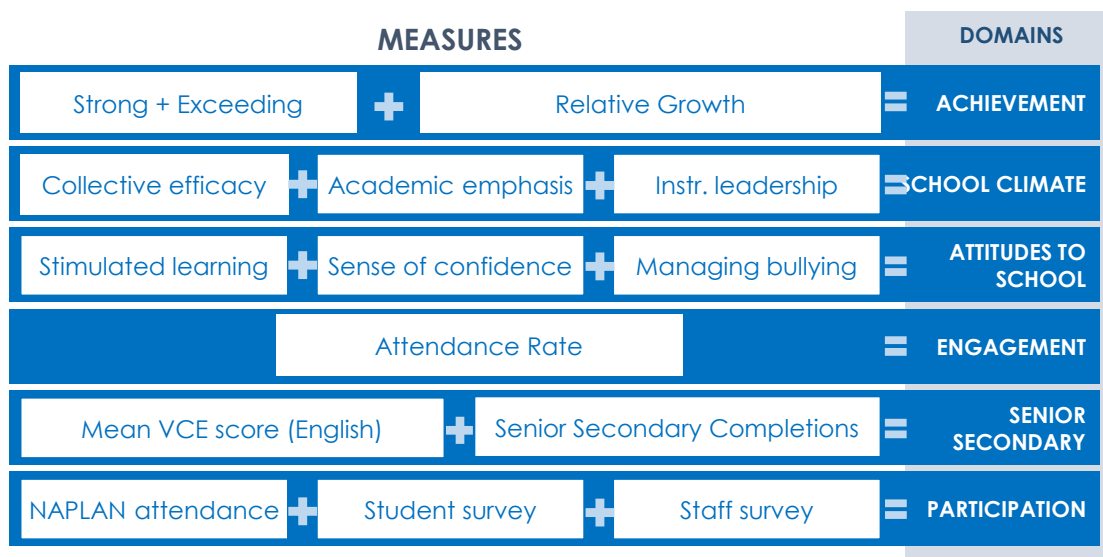
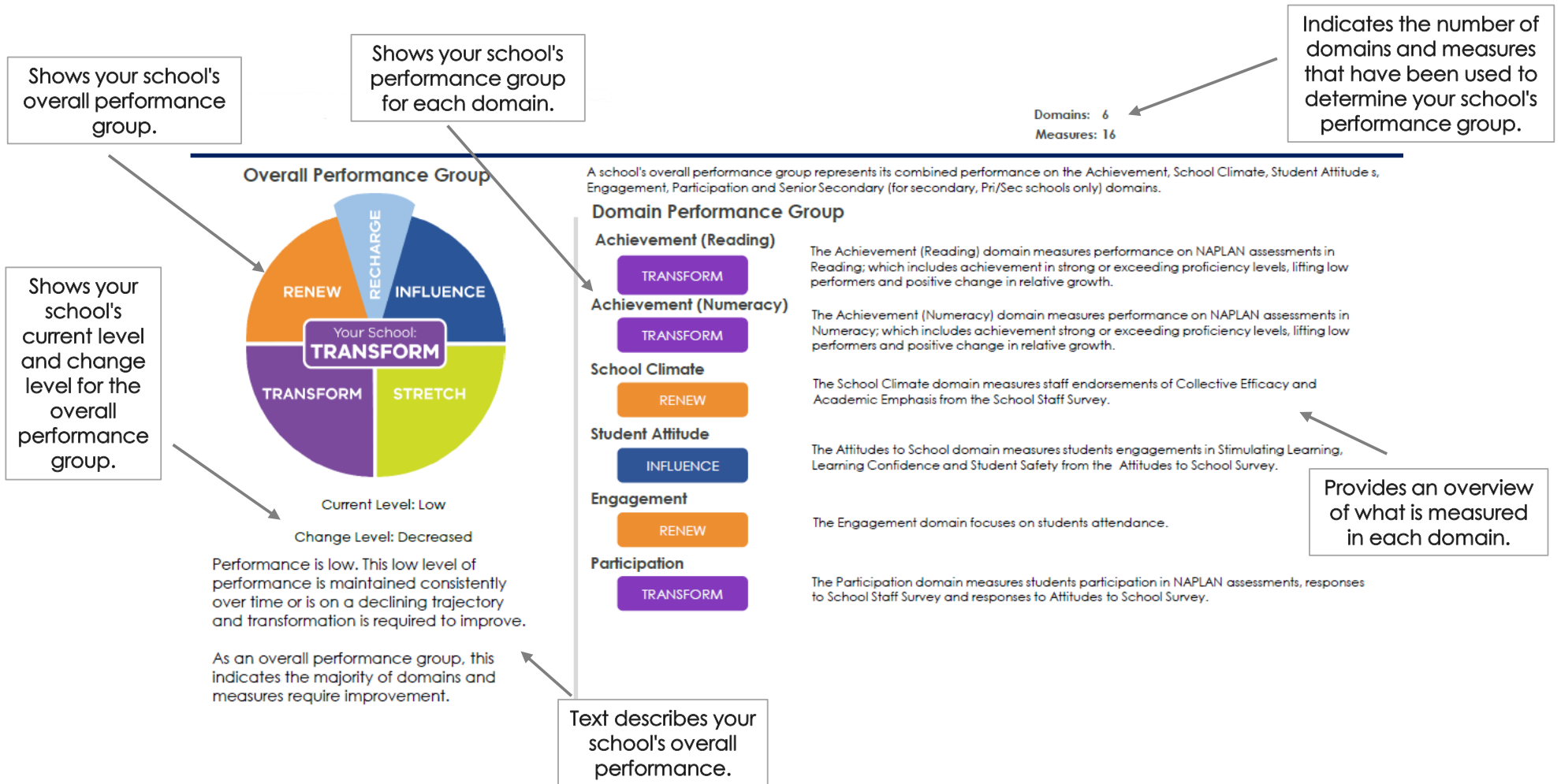


FIGURE 3: MEASURES AND DOMAINS

- The **six domains** and associated **measures** shown at left form the basis of the differentiation method.
- These have been selected based on their alignment to FISO school improvement objectives and Education State targets.



The summary page provides a graphical summary of your school's overall performance group and your performance in each applicable domain.



How to read your school performance report | **DETAIL PAGES**



Domain	Domain Performance Group	Measure	Measure Performance Group	Current Result (Year)	Current Result (Latest year)	Current Level	Change result (Last 3 years)	Change Level
Achievement (Reading)	Influence (High, Increased)	% of students in Strong or Exceeding (Year 5)	Influence	2023	91.7%	Very High		
		% of students with Medium or High Relative Growth (Years 3 to 5)	Influence	2023	82.6%	High	6.3%	Increased
Achievement (Numeracy)	Renew (Medium, Maintained)	% of students in Strong or Exceeding (Year 5)	Renew	2023	76.1%	High		
		% of students with Medium or High Relative Growth (Years 3 to 5)	Renew	2023	77.9%	Medium	-0.4%	Maintained
School Climate	Renew (High, Maintained)	% of positive endorsement in Collective Efficacy	Recharge	2023	89.0%	High	-1.3%	Decreased
		% of positive endorsement in Academic Emphasis	Influence	2023	83.7%	High	3.6%	Increased
		% of positive endorsement in Instructional Leadership	Renew	2023	87.2%	High	0.8%	Maintained
Student Attitude	Influence (Very High, Increased)	% of positive endorsement in Stimulated Learning (Years 4-6)	Influence	2023	93.7%	Very High	3.2%	Increased
		% of positive endorsement in Sense of Confidence (Years 4-6)	Influence	2023	88.6%	High	1.1%	Increased
		% of positive endorsement in Managing Bullying (Years 4-6)	Influence	2023	92.6%	Very High	0.3%	Maintained

Your school's domain performance group, current level and change level for each domain.

The measures that are used to determine your school's performance in each domain.

Your school's performance group for each measure.

Your school's most recent performance result for each measure.

Shows your school's current level for each measure.

The change in your school's performance over the last 3 years for each measure.

Shows your school's change level for each measure.

